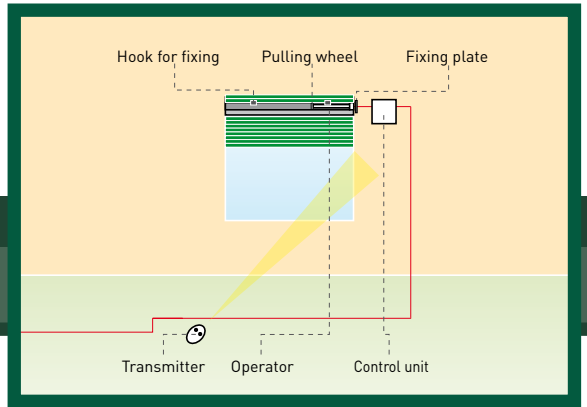




LOOP SERIES

ROLLER SHUTTER AUTOMATION
RESIDENTIAL AND APARTMENT-BLOCK USE

68



• A MODEL FOR EVERY NEED.

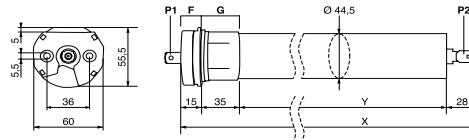
→ Several versions available for shutters of any material (aluminium, steel, PVC, wood) and size (max. weight 88 kg with Loop 50/50, Loop 50/50M and octagonal tube with diameter 60).

• SMART TECHNOLOGY.

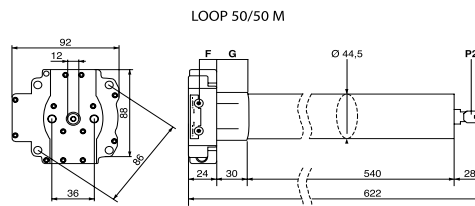
→ Fast adjustment of the limit switches.

• SAFE USE.

→ Compact and robust self-braking gearmotor.



	X	Y
LOOP 50/10	537	459
LOOP 50/15	537	459
LOOP 50/35	582	504
LOOP 50/50	582	504



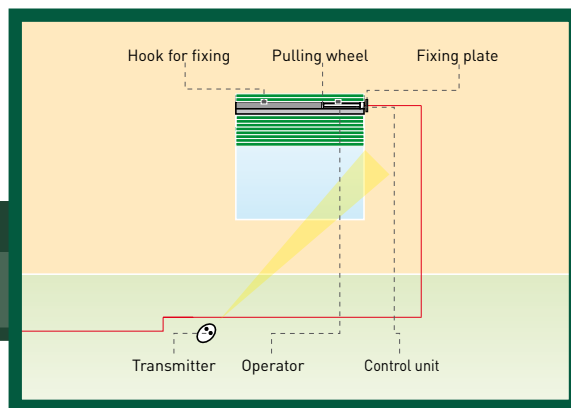
CODE	DESCRIPTION	VOLTAGE	OPERATOR DIAMETER	ROLLER SHUTTER WEIGHT	Q.TY PER PALLET
P910028 00001	LOOP 50/10	230 V	60 mm	18 kg	10
P910028 00002	LOOP 50/15	230 V	60 mm	35 kg	10
P910028 00003	LOOP 50/35	230 V	60 mm	55 kg	10
P910028 00004	LOOP 50/50	230 V	60 mm	88 kg	10
P910029 00001	LOOP 50/50M	230 V	60 mm	88 kg	10

TECHNICAL FEATURES

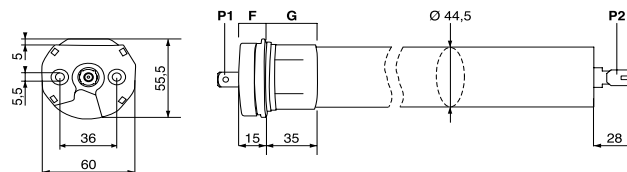
	FEATURES OF THE RANGE		SPECIFIC FEATURES				
			LOOP 50/10	LOOP 50/15	LOOP 50/35	LOOP 50/50	LOOP 50/50M
CONTROL PANEL	ELBA, ELBA BU (suggested)						
OPERATOR	irreversible						
POWER SUPPLY	230 V~ ± 10%, 50 Hz single-phase						
ABSORBED POWER			130 W	160 W	210 W	270 W	270 W
THERMAL PROTECTION	integrated						
ABSORBED CURRENT			0,5 A	0,5 A	1 A	1,1 A	1,1 A
MAX TORQUE			10 Nm	20 Nm	30 Nm	50 Nm	50 Nm
SHAFT OUTPUT RPM			16 min	16 min	16 min	12 min	12 min
LIMIT SWITCH RPM	28						
TYPE OF LIMIT SWITCHES	mechanical						
WEIGHT UP WITH ROLLER DIAM, 60			18 kg	35 kg	55 kg	88 kg	88 kg
MANUAL RELEASE			-	-	-	-	release with rod
ENVIRONMENTAL CONDITIONS	from -10°C to +40°C						
DEGREE OF PROTECTION	IP44						
OPERATOR WEIGHT			~2,1 kg	~2,2 kg	~2,75 kg	~2,8 kg	~2,8 kg

LOOP RADIO SERIES

ROLLER SHUTTER AUTOMATION
RESIDENTIAL AND APARTMENT-BLOCK USE



69



• ONE MODEL FOR EACH REQUIREMENT.

→ Different versions available for roller shutters of any materials (aluminium, steel, pvc, wood) and dimensions (max weight 88 kg with Loop Radio 50/50 and octagonal pipe with 60 diameter).

• INTELLIGENT TECHNOLOGY.

→ Electronic limit device.

• SIMPLER INSTALLATION.

→ Minimum wiring needed.

→ Limit device setting from remote control.

CODE	DESCRIPTION	VOLTAGE	OPERATOR DIAMETER	ROLLER SHUTTER WEIGHT	Q.TY PER PALLET
P910030 00001	LOOP RADIO 50/10	230 V	60 mm	18 kq	10
P910030 00002	LOOP RADIO 50/20	230 V	60 mm	35 kq	10
P910030 00003	LOOP RADIO 50/30	230 V	60 mm	55 kq	10
P910030 00004	LOOP RADIO 50/50	230 V	60 mm	88 kq	10

5

TECHNICAL FEATURES

FEATURES OF THE RANGE

SPECIFIC FEATURES

		LOOP RADIO 50/10	LOOP RADIO 50/20	LOOP RADIO 50/30	LOOP RADIO 50/50
CONTROL PANEL	incorporated				
OPERATOR	irreversible				
POWER SUPPLY	230 V- ± 10%, 50 Hz single-phase				
ABSORBED POWER		130 W	160 W	210 W	270 W
THERMAL PROTECTION	integrated				
ABSORBED CURRENT		0,5 A	0,5 A	1 A	1,1 A
MAX TORQUE		10 Nm	20 Nm	30 Nm	50 Nm
SHAFT OUTPUT RPM		16 min	16 min	16 min	12 min
LIMIT SWITCH RPM	28				
TYPE OF LIMIT SWITCHES	electronic				
WEIGHT UP WITH ROLLER DIAM, 60		18 kg	35 kg	55 kg	88 kg
ENVIRONMENTAL CONDITIONS	from -10°C to +40°C				
DEGREE OF PROTECTION	IP44				
OPERATOR WEIGHT		~2,1 kg	~2,2 kg	~2,75 kg	~2,8 kg

SELECTION GUIDE

Roller Shutter width

WOOD

m.	0,8	0,9	1	1,1	1,2	1,3	1,4	1,5	1,6	1,7	1,8	1,9	2	2,1	2,2	2,3	2,4	2,5	2,6	2,7	2,8	2,9	3	
1																								
1,1																								
1,2																								
1,3																								
1,4																								
1,5																								
1,6																								
1,7																								
1,8																								
1,9																								
2																								
2,1																								
2,2																								
2,3																								
2,4																								
2,5																								
2,6																								
2,7																								
2,8																								
2,9																								
3																								

LOOP and
LOOP RADIO
50/10

LOOP 50/15
LOOP-RADIO 50/20

LOOP 50/35
LOOP RADIO 50/30

LOOP and
LOOP RADIO
50/50

Roller Shutter height

Roller Shutter width

ALLUMINIUM
PVC

m.	0,8	0,9	1	1,1	1,2	1,3	1,4	1,5	1,6	1,7	1,8	1,9	2	2,1	2,2	2,3	2,4	2,5	2,6	2,7	2,8	2,9	3	
1																								
1,1																								
1,2																								
1,3																								
1,4																								
1,5																								
1,6																								
1,7																								
1,8																								
1,9																								
2																								
2,1																								
2,2																								
2,3																								
2,4																								
2,5																								
2,6																								
2,7																								
2,8																								
2,9																								
3																								

LOOP and
LOOP RADIO
50/10

LOOP 50/15
LOOP RADIO 50/20

LOOP 50/35
LOOP RADIO 50/30

LOOP and
LOOP RADIO
50/50

Roller Shutter height

ACCESSORIES



D113716 00002 - ELBA
See page 140.



D113717 00002 - ELBA BU
See page 140.



P130025 - ER1
External receiver used to control motors without an incorporated radio. Compatible with Tel. 1 and Tel. 5 transmitters and Timer.



D111828 - TEL1
1-channel remote control for the LOOP RADIO motors and ER-1 receiver.



D111829 - TEL5
5-channel remote control for the LOOP RADIO motors and ER-1 receiver.



P130023 - TEL FIX
Wall-mounted remote control for the LOOP RADIO operator.



P130024 - TIMER
Used to control the LOOP RADIO motors and ER-1 external receiver, by automatically setting the roller shutter opening/closing times.



ACCESSORIES



P130018 - KIT TL 60
Basic hardware kit for installing one LOOP operator, comprising: no. 1 wall bracket - no. 1 adapter for octagonal roller, size 60 - no. 2 hooks for fixing the belt to the winding roller.



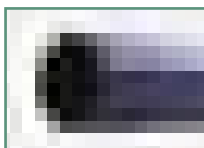
P130020 - KIT TL 60M
Basic hardware kit for installing one LOOP operator with manual release comprising: no. 1 wall bracket for manual release - no. 1 adapter for octagonal roller, size 60 - no. 2 hooks for fixing the belt to the winding roller.



P130001 - BLOCCANTI 40
40 mm anti-break-in block. Available for standard, mini and wooden slats. 1 block every 1.10 m of roller shutter.



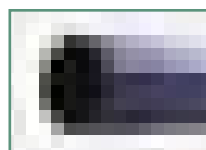
P130013 - BLOCCANTI 50
50 mm anti-break-in block. Available for standard, mini and wooden slats. 1 block every 1.10 m of roller shutter.



P130010 - RUL 60/1,5
Octagonal shutter winding roller \varnothing 60 x 1.5 m.



P130012 - RUL 60/3
Octagonal shutter winding roller \varnothing 60 x 3 m.



P130008 - RUL 60/6
Octagonal shutter winding roller \varnothing 60 x 6 m.



P130002 - CAL 60/100
Adjustable telescopic octagonal cover for \varnothing 60 roller.



P130004 - CAL 60/30
Octagonal shaped cover for \varnothing 60 roller.



P130006 - GANC
Hook for fixing the belt to the winding roller.



P130015 - SM504
Wall-mounted 50 support with bearing.



P130014 - SM505
Support 50 to be flush mounted.



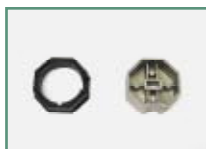
N999324 - SM5013
Revolving wall adapter for manual release.



N999325 - SM5014
Bracket with 10 mm shaft for direct coupling to motor and square-section snap-on shaft for mounting.



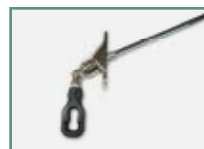
N999326 - SM5015
Dual-position revolving bracket with rounded shaft, with two positions and associated saddle for manual release.



N999323 - AD5027
Wheel+adapter pack for series 50 actuator for octagonal roller \varnothing 60. Note: adapters for rollers of different form available on request.



N999328 - MM8
Eye-ring for manual release.



N999329 - MM9
45° universal joint for manual release.



N999330 - MM10
90° universal joint for manual release.



N999331 - MM11
1.5 m articulated crank with hook for manual release.



N999332 - MM12
1.5 m rigid crank with hook for manual release.



P111182 - ANEM
Wind sensor.



P111183 - CREP
Twilight sensor.